

Duluth Entertainment and Convention Center Harbor Side Addition Duluth, Minnesota

Gausman & Moore provided complete mechanical and electrical design including lighting and sound system design. A 12,000 sq.ft. Ballroom overlooks the harbor with additional meeting space and a preparation kitchen on the second level and retail shop on the street level. The project required relocation of cooling, fire protection and ventilation equipment that served the existing building.



El Capitan Theater Hollywood, California

This 1926 era movie palace, was restored in great detail. Electrical design including new L.A. D.W.P. substation, installation of theatrical lighting and sound system, and restoration of a 150 HP organ blower system was provided.

This project won the Electrical Excellence Award from NECA.



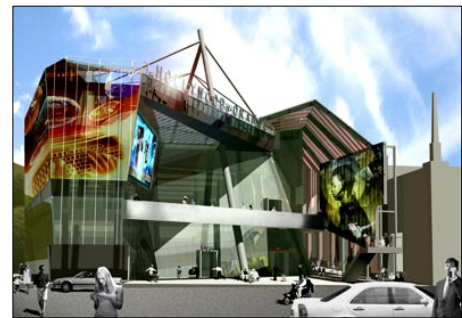
Grand Ely Lodge Lake Vermillion, Minnesota

Gausman & Moore provided mechanical design/build services working for the mechanical contractor on this hotel and conference center on the shores of Lake Vermillion. The conference center has a capacity of 300 people with full banquet commercial kitchen facilities. The building includes a restaurant, 61 guest rooms and an indoor pool.



Hollywood Orange, LLC Hollywood, California

This building was a design that was not constructed. Electrical design included unique lighting design, automated lighting controls, LCD automated billboard sign and new L.A. D.W.P. substation.



Hotel Carrillo
Santa Barbara, California

This Spanish-Mediterranean architecture style is a new 4-star, luxury hotel, is the epicenter of the area's business activities. It includes 97 luxury rooms and suites, a 120-seat restaurant and 5,500 sq.ft. of banquet and meeting space.



Ruttger Sugar Lake Lodge
Grand Rapids, Minnesota

The mechanical design work for this project included ventilation, piping, heating, fire protection, natural gas, boiler room emergency generator, refrigeration piping, and cooling towers. The electrical design work included lighting, power distribution, communication systems, fire alarms, telephone equipment, clocks, and sound systems.



Ruttgers Zig's Dining
Deerwood, Minnesota

Zig's is a combined restaurant and pro shop for the historic Ruttger's Bay Lake Lodge and Lakeview Golf Course. This rustic looking building contains a modern full service restaurant. Gausman & Moore provided full mechanical and electrical design services including lighting design. The engineering design challenge was to integrate modern systems into a building on a historic lodge site without compromising the lake views while still maintaining functionality.



Target Center Arena
Minneapolis, Minnesota

The facility contains an 18,000-seat sports arena, a two level health club, and a restaurant on the second floor. The arena is used for basketball, hockey, concerts and recreational events.

Communication systems were designed for the projection of national sporting events. A smoke control system was designed utilizing air handling systems normally used for air conditioning.

This project included an emergency generator for emergency lighting, exit lighting, fire protection and fire alarm systems.



University of Minnesota Duluth
Weber Music Performance Hall
Duluth, Minnesota

Gausman & Moore designed the mechanical and electrical systems for this Cesar Pelli designed state of the art music performance hall. The acoustical design criteria impacted the ventilation system and electrical systems. The building is fed by campus utility systems for steam, chilled water, compressed air, power and communication. Medium voltage transformer/switch vault was reconstructed to provide service power to both existing campus buildings and new Performance Hall.

